

T O B A SEA FOLK MUSEUM



The TOBA SEA-FOLK MUSEUM was founded in 1971 to preserve the knowledge and history of fishing traditions, culture and heritage for future generations. For over 40 years the museum has collected and preserved antique fishing equipment from Mie Prefecture's fishing villages, and documented the traditions and religion of the area's fishermen. In 1985 the museum was presented with an award by Japan's Agency for Cultural Affairs-'Important Tangible Cultural Properties'- in recognition of our 6,879 piece collection of Toba's ancient fishing traditions and equipment. We are the only museum in Japan dedicated to understanding the Japanese traditions of fishermen and the relationship with the sea. The museum is located in a beautiful part of Toba's countryside close to the sea, where you can hear the birds singing and appreciate the sea air. You can look back at the old days of Japan as you explore 7 main exhibits, in the museum's friendly atmosphere.

■ INFORMATIONS

[Hours of Operation]

21st Mar ~ 30th Nov ... 9.00am ~ 5.00pm
 (Extended Hours: 29th Apr ~ 5th May
 and 1st Aug ~ 20th Aug ... 8.30am ~ 5.30pm)
 1st Dec ~ 20th Mar ... 9.00am ~ 4.30pm

[Closed]

26th Jun ~ 30th Jun
 26th Dec ~ 30th Dec

[Admission fees]

	Adults (over 18 years)	Children
1 person	¥800	¥400
Groups (20-99 people)	¥720	¥320
Groups (over 100)	¥640	¥280

[Access]

Train and Bus: When coming from the JR and Kintetsu Line Toba station, Please board the Sankou Bus which goes via the Pearl road and takes about 35 minutes. Get off at the "Umi no hakubutsukan" stop and the museum is a 10 minute walk. We are easy to find, there are directional signs in place.

TOBA SEA-FOLK MUSEUM
 The Foundation of Tokai Suisan Kagaku Kyoukai
 1731-68 Ogitsu Uramura-town Toba-city Mie-pref. Japan 517-0025
 TEL: 0599 32 6006 FAX: 0599 32 5581
 URL: <http://www.umihaku.com>



■ Special Exhibition

Displaying the collections and descriptions that delved into permanent exhibitions.

■ Practical Experience

Enjoy the experiences using shells, seaweeds and you learn from the knowledge and culture of traditional Japanese sea-folk.

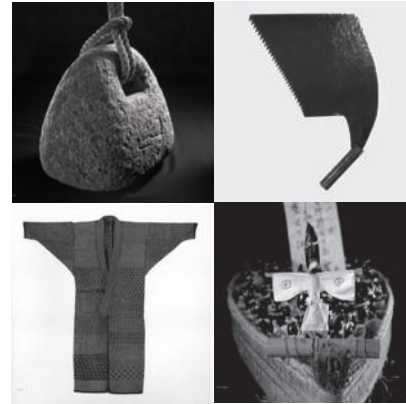
- Murex shell dying (one coaster) ¥700
- Seaweed card making (a postcard and a book mark) ¥500
- Shell magnet making (2 magnets) ¥500
- ★ More programs are available, please ask the staff.

Repository Of Wooden Boats

■ WOODEN BOAT AND NAVIGATION

Travel back in time and hear the sounds of waves with the collection of original Japanese and Asian wooden boats in the museum's ship storage. In Japan, boat builders used to put a spirit called 'funadama-san' in each new boat.

As boat builders are becoming fewer in number today, unique and traditional construction techniques are disappearing.



Marine Photo Gallery

■ Seasonal exhibition of marine-related photography.

■ FISHERY IN ISE BAY

Ise Bay used to be a productive fishing area. People would catch only the food they needed for the day. In those days man depended on himself and the simple technology he developed. 'Utase-ami ryo', trawling nets from a sailboat, was one traditional method of fishermen.

■ FISHERY IN SHIMA AND KUMANO

In the past, fishermen harpooned marlins, sharks and whales; they dropped octopus-pots and snatched schools of sand lance by scoop net. These methods have been replaced by technological innovations. Don't miss the processing of 'Katsuo-bushi' (dried skipjack) and 'Nori' (seaweed), both of which are essential to prepare Japanese dishes.

■ AMA IN SHIMA

The history of Ama fishing dates back 10,000 years. How could they catch abalone in less than 50 seconds without scuba-equipment? Try holding your breath for as long as the Ama, as you watch them dive.

★ EXHIBITIONS <7 main sections>
There is no specific route.
Please view freely.
Photographs are allowed of all exhibits in the museum.

Museum shop

■ Plush ell are popular, Ama Carm against evil, Books, Post cards, locally Harvested products from sea, etc.

Entrance

Cafe Arami

■ Please enjoy our original Imenu, seasonal seafood.

Exhibition Hall A

■ TRADITIONS OF SEA FOLK

People love the ocean. For the Japanese, inhabitants of Pacific islands, the ocean has provided more than just food and salt; it has been used as a highway trade. Moreover, the ocean has been a source of customs and religions since ancient times. Traditions of Sea Folk have been characterized by their long and significant relationship with the ocean.

■ SEA POLLUTION

Industrial waste discharge and land reclamation have destroyed tidal flats and shallow seaweed areas, the home of small marine life. Thermal pollution from atomic generator plants affects all environments of the sea. Our daily life easily becomes a source of pollution. It's time to Save Our Seas when we notice S.O.S. signals from marine organisms.

■ SEA-FOLK FAITH AND FESTIVALS

In Japan, gods reside everywhere. This is an important point to understand the Faith of Japanese. Gods may settle in a house, in a boat, and even in a small piece of wood. Japanese worship natural phenomena because of this belief. Meet 'Ebisu', the Japanese god that brings good fortune and harvest.